



OUR MISSION

Honoring every moment of life, Pathways Hospice provides compassionate, excellent, comprehensive care for those who have an advanced medical condition and those who are grieving.

INSIDE THIS ISSUE

DEDICATION OF THE HANDS PLAQUES AT
PATHWAYS HOSPICE CARE CENTER

PATHWAYS HOSPICE CLINICAL STAFF ATTEND
NHPCO CONFERENCE

GOLFERS PUTT FOR PATHWAYS

9TH ANNUAL DEBBIE BOOSE MEMORIAL
TENNIS TOURNAMENT

A VINTAGE AFFAIR 2009 -
A CLASSIC WINE TASTING

UPCOMING EVENTS

SPONSORSHIP OPPORTUNITIES

BULAWAYO ISLAND HOSPICE PARTNERSHIP

THREE WAYS YOU CAN MAKE A DIFFERENCE

EVERY STEP A TRIBUTE TO SPECIAL
GRANDMOTHER

VOLUNTEER SPOTLIGHT

VOLUNTEER ANNIVERSARY OF
SERVICE RECOGNITION

EAGLE SCOUT CANDIDATE TACKLES GARDEN
PROJECT FOR PATHWAYS HOSPICE

DEDICATION OF THE HANDS PLAQUES AT PATHWAYS HOSPICE CARE CENTER



Mark Clem, Pathways Hospice Care Center Director; Mary Hall, RN; Melody Anson, CNA; Jan Louk, Counselor; Cheri Baum, LPN; Rick Riddoch, MSW and Nancy Noyes, President of Noyes Art Designs

On August 19th the Pathways Hospice Care Center hosted the Hands Plaques Dedication Ceremony, the culmination of creative involvement with artist Nancy Noyes of Denver which began last March. Staff at the Pathways Hospice Care Center engaged in a team bonding exercise involving the creation of a wonderful piece of artwork, representing the Constructive Healing Cycle of Feng Shui. The five natural elements of the healing

cycle (METAL *holds*, WATER *which feeds*, WOOD *which fuels*, FIRE *which enriches* and EARTH *which creates* METAL) are represented by personally designed and traced outlines of each staff member's hand. This healing hands concept, developed to support Nancy's terminally ill brother, John, enabled him to feel the strength and love of his family. John encouraged Nancy to share the healing hands artwork with others in similar situa-

tions to enable them to feel the same connection with those who love and provide care for them. We hope that individuals who spend time at the Care Center experience the compassion and commitment with which these uniquely qualified individuals dedicate themselves to the medical, spiritual, and emotional support of patients and families at the Pathways Hospice Care Center.

The ceremony involved a presentation by Mark Clem, Pathways Hospice Care Center Director, and recognition of the clinical staff and hands kit creator, Nancy Noyes. Music by Pathways Hospice Music Therapists, refreshments, and an offering of a Blessing of the Hands by the Chaplains completed this event.

For more information on the 'The Hands Kit – Connected by Love' go to www.constructivehealing.com or call (303) 332-8838.



PATHWAYS HOSPICE CLINICAL STAFF ATTEND NHPCO CONFERENCE

Thirty-three clinical staff members were privileged to attend the National Hospice and Palliative Care Organization's (NHPCO) 10th Clinical Team conference in Denver last September. Staff participated in sessions to identify best practices in advanced symptom management, discuss regulatory requirements and approaches to ensure compliance, hear about innovative programs in medical, psychosocial, spiritual and bereavement care at the end of life and maximize the effectiveness of the Interdisciplinary Team. Attendees reflected on the importance of the empathic presence

that hospice caregivers bring to the noble and indispensable task of assisting those facing the end of life.

Three Pathways Hospice staff members had the distinction of being selected to present at this national conference. Laura Beer, MA, Music Therapist, and Maria McLain Cox, MA, BCC, Chaplain, presented 'Crossing the Sacred Bridge with People Who Have Dementia: Enhanced Communication Techniques'. Nancy Jakobsson, MSW, Director of Pathways for Grief and Loss, presented 'The Nuts & Bolts of Creating a Dynamic Community Grief Center'.

GOLFERS PUTT FOR PATHWAYS

Golfers were in full swing this summer raising funds for Pathways Hospice at four tournaments: The Lucky Joe's Charity Golf Tournament, The Fort Collins Country Club Women's Golf Association Tournament, The Rio Grande Golf Tournament & the Pathways Hospice / NAIFA Golf Benefit.

Lucky Joe's Sidewalk Saloon co-owners, Dan "Lucky" Kerig and Joe Vader started this charity tournament in June 1996 to have fun on the golf course with their customers and business associates and raise money for a good cause. "This has been an amazing community to us and we are more than happy to give back", Joe explained. Since inception, the tournament and associated silent auction have generated over \$110,000 in contributions for local charities; this is the third time that the proceeds have benefitted Pathways Hospice. The 2009 tournament raised \$10,364 bringing the cumulative total for Pathways Hospice to over \$40,000. We are thankful for their enduring support of Pathways Hospice and other local non-profit agencies.

Fort Collins Country Club Women's Golf Association, long-time supporters of the Pathways for Grief and Loss program, held their 14th annual golf benefit generating \$3,525 this year. Nancy Jakobsson, Director of Pathways for Grief and Loss, comments "I've very

much enjoyed getting to know these women over the years. We are so appreciative that of all the worthwhile causes in our community, they've chosen to support our grief and loss programs".

The Rio Grande Restaurant hosted a golf tournament for Pathways Hospice in remembrance of a friend and client who received hospice care through the agency. We gratefully accept and acknowledge their contribution of over \$1,000.

Pathways Hospice & the National Association of Insurance & Financial Advisors (NAIFA) hosted a golf benefit that took place at Ptarmigan Country Club; this was the seventh tournament in as many years. Seventy six golfers participated in the morning shotgun. Pathways Hospice would like to recognize the efforts of the NAIFA planning committee and all those who've played in this tournament. Proceeds exceeded \$7,500 in part due to the generosity of our major sponsors:

- Advanced Roofing Technologies
- Clear Channel
- Volk & Bell Benefits
- Advanced Medical Imaging Consultants
- All Phase Restoration
- American Family Insurance - Kevin Ross Agency
- Great Western Bank
- Front Range Internet

A VINTAGE AFFAIR © 2009

This fall event, known for its intimate atmosphere and fine food and wine pairing, was most enjoyable. Over \$7,000 was raised for Pathways Hospice at this classic food and wine event to provide comprehensive end-of-life care and grief support to anyone in the community regardless of financial circumstance.

Our sincere gratitude to Wilbur's Total Beverage for presenting the event and to the hosts Miramont Lifestyle

Fitness, Domenic's Bistro & Wine Bar, and Vincent Heavenly Pies & Pasta. We also appreciate Lightsource Creative Communications for their contribution of valuable design and promotional expertise. Our thanks to all those who attended this year's event. We take this opportunity to also recognize these wonderful supporters of Pathways Hospice: KUNC, Dellenbach Motors, Earl and Lis Sethre, Vaught Frye Ripley Design Inc., and Skybeam.

9TH ANNUAL DEBBIE BOOSE MEMORIAL TENNIS TOURNAMENT

Despite the stormy weather in June, the tournament was a huge success with over 250 players playing in over 250 matches...a record number! The addition of the Family Events and the Quick Start tennis program were a big hit and we hope to build on these events and more next year.

The Friday Night Tournament Dinner, hosted by Carrabba's Italian Grill, was attended by more than 350 people. Attendees enjoyed the delicious meal, live music, entertainment for the kids and the professional exhibition match. Proceeds of \$22,700 support the Pathways Hospice In-Patient Care Center which provides high level end-of-life care to over 225 patients annually.

Our thanks to all our supporters including these major sponsors: Jorgensen Laboratories, Loveland Ten-

nis Association, Griffin Foundation, Vision Financial Group, Right at Home, USTA CO and CO Youth Tennis Association Foundation, First Community Bank, SouthCo, Poudre Valley Hospital System, The Erions, John Boose, Miramont Lifestyle Fitness, La Casa Loca Hobby Shop, and Poudre Valley Radiation Oncology / Centennial Radiation Oncology.



UPCOMING EVENTS

Please call (970) 663-3500 or visit www.pathways-care.org for more information.

Abby's Signature Concert Series – Christmas Concert

December 21, 2009
10:00 – 11:00 AM and 5:30 – 6:30 PM
First Presbyterian Church in Ft. Collins
Admission is free.
Donations accepted for Pathways Hospice and Respite Care.
Featuring Dave Beegle on guitar, Christy French on piano, Dave Everitt on harmonica, Brian Frable & Chuck Landgraf on percussion. Generous support provided by Carole Egger (Christmas Concert Sponsor) and Fort Collins Sertoma, Gina & Dan Schwartz and Shauna & Dary Southwick (2009 Series Sponsors).

An Evening of Remembering - A Community Memorial Service

January 11, 2010 at 5:30 PM
Pathways Hospice, 305 Carpenter Road in Fort Collins
Open to all members of the community in remembrance of those we've loved and lost. Those attending may send photographs of their loved one to be included in a slide show.

Abby's Signature Concert Series – Good Friday Concert

April 2, 2010
10:00 AM – 11:00 AM
First Presbyterian Church in Ft. Collins
Admission is free. Donations accepted for Pathways Hospice and Respite Care.

SPONSORSHIP OPPORTUNITIES

Promote your business and highlight your commitment to serving the community by becoming a 2010 special event sponsor. New this year, the Pathways Heart Sponsorship, is a unique opportunity which offers visibility to a variety of community-minded, active residents of Fort Collins, Loveland & Windsor at:

Debbie Boose Memorial Tennis Tournament (June 7th – 13th)
Breakfast in the Park - Back by popu-

lar demand! (July 31st)
A Vintage Affair (September)

If you or one of your friends, colleagues or business associates would like to learn more about these events and in-kind and financial sponsorship opportunities, please contact Kim Mueller, Marketing & Events Director, at kim.mueller@pathways-care.org or 970.663.3500. To learn more visit www.pathways-care.org, click on Calendar of Events.

BULAWAYO ISLAND HOSPICE PARTNERSHIP

Our Foundation for Hospices in Sub-Saharan Africa partner, Bulawayo Island Hospice in Zimbabwe, reports that the economic, financial and political situation continues to be very difficult in the second half of this year with inflation being a huge factor. Donations are a mere 2% of the previous year and our contributions are the reason they are still able to

care for those at end of life.

A Sunset Safari, our August 29th fundraiser at Chapungu Sculpture Park in Loveland was tremendously successful, raising \$9,300 for Bulawayo Island Hospice. We sincerely appreciate the efforts of A Sunset Safari planning committee and the participation of all 250 guests who shared a beautiful



A Sunset Safari

summer evening with us in support of this cause. This event would not have been possible without these major sponsors:

Bent Fork – The Grill, Vision Financial Group, Doug and Lynne Erion, Dr. Sarvjit Gill, First Western Trust Bank, Rowe's Flowers and Gifts, Dr. Jerry Chase, Loveland Sertoma,

Designs, McWhinney, Loveland Design, TEN Aveda Salon & Spa, Embassy Suites – Loveland, The Group Inc. – Loveland, Nancy Tucker, and Kutandara.

Since August of 2008, Pathways Hospice in conjunction with our sponsors, employees, and event attendees, has

raised over \$21,000 for Bulawayo Island Hospice. Five members of the Africa Partnership committee at Pathways Hospice are planning a self-funded trip to Bulawayo, Zimbabwe next spring to get to know the staff and fully understand the needs in Bulawayo.

THREE WAYS YOU CAN MAKE A DIFFERENCE

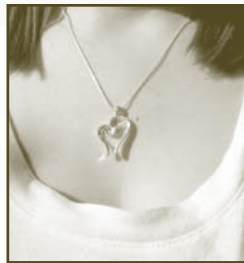
Due to the generosity of thousands of donors in our community we are able to fulfill our mission everyday. As a community-based, non-profit hospice provider, our promise is to provide hospice care to anyone in need regardless of their financial situation or insurance coverage.

Before the end of 2009, Pathways Hospice will serve nearly 1,000 patients with quality, compassionate hospice care, and more than 5,000 community residents will receive grief and bereavement support. Each year, the gap between what we are reimbursed and the cost of services grows increasingly wider. We simply could not accomplish our day-to-day work without the support of our donors. Here are three unique and different ways that you can donate to Pathways Hospice.

Purchase unique and affordable gifts benefitting Pathways Hospice
Mountain Avenue offers hand-crafted, eco-friendly items purchased from fair trade certified organizations and individuals. A portion of the profits, up to 25%, will come back to Pathways

Hospice. Receive 15% off your order through December 15th. Remember to direct the donation to Pathways Hospice at checkout; use discount code Path101. For more information, visit www.mountainavenue.com.

Other gift giving options include a sterling silver pendant. In collaboration with 'The French Collection' and local artist John Stegnar, Pathways Hospice is excited to offer this beautiful custom-designed signature necklace now available for Christmas gift-giving. All proceeds benefit Pathways Hospice. It is packaged in a box with a velvet drawstring bag.



Sterling Silver Pendant - With 18" Sterling Silver Snake Chain \$95

Make a gift to our Annual Giving Campaign

In order to conserve our resources and honor the time and consideration of

our donors, Pathways Hospice conducts a giving campaign only once per year. Our Annual Giving Campaign is going on now. For more information on how you can contribute please visit us online at www.pathways-care.org or call us at 970-663-3500.

Pathways Hospice Endowment Fund

Pathways Hospice created the *Enduring Legacy Society* to recognize and honor those donors who have invested in the future of Pathways Hospice through bequests, gift annuities, charitable remainder trusts, gifts of stock, life insurance and other deferred giving options.

In working towards the goal of long-term sustainability, we have partnered with the Community Foundation of Northern Colorado to establish an endowment fund where we can direct charitable donations and gifts. There are proposed changes to both estate and personal tax legislation that may make a contribution beneficial at this time. If you would like more information on how to include Pathways Hospice in a planned gift, please contact us at (970) 663-3500.

EVERY STEP A TRIBUTE TO SPECIAL GRANDMOTHER

Jacob Fellure is a Loveland resident who has been blessed by Pathways Hospice and now wants to give back with his wife, Nicole, by running the Las Vegas Marathon on December 6th as a benefit for the agency. On behalf of Pathways Hospice, he is requesting that you consider joining the team by making pledges per mile or for the 26.2 mile finish with 100% of your money going directly to Pathways Hospice.

For Nicole and Jacob, the Marathon and fundraising is more than just a test of physical endurance or a simple act of charity. Jacob states, "We have been personally touched by Pathways Hospice during the time my grandmother's life began to fade." Jacob's mother, Martha Fellure, wrote this in her journal three days before her mother, Ona Baldock, passed away at the Pathways Hospice Care Center at McKee Medical Center:

"I'm so thankful for the provision of this place where I can quietly release my mother...a place where I can reflect on our relationship and all she's been

to me...a place where I can honestly face the inevitable regrets and where I can joyfully reminisce, holding close the precious memories of a lifetime. This is a place where I can begin to gather my thoughts and prepare for her final service...even a place where I can let myself begin to embrace the sorrowful thoughts of a future without her. I find this to be a place without interruptions of daily duties...a place of secluded intimacy with the precious presence of my mother still lingering beside me and yet a place where help is just a button's push away.

This is a place where the quiet concern of the caregivers lets me share with them pieces of who my mother really is. Their request that I bring in pictures of her has helped in my healing as I let them see beyond this fragile 78 pound lady and into the vibrant woman she was to me and all those who know and love her. I am so thankful for the opportunity to share her real life with those who are letting her die with so much dignity and comfort."

Jacob has received generous support

from clients and vendors associated with his American Family Insurance agency, but wants to take their efforts to the next level in order to generate more financial support for Pathways Hospice.

Jacob concludes "As our training schedule takes us on 4 to 8 mile runs daily throughout the week and 15 to 22 mile runs on the weekends, Nicole and I are determined to give back to Pathways. For us this is a personal mission to ensure that other families will have Hospice available to them in their time of need."

Send your pledges to:

**Jacob Fellure Agency –
American Family Insurance
118 S Taft Ave
Loveland, CO 80537
Email: jfellure@amfam.com**

Jacob will let you know after the Marathon how many miles were completed so you will know how much to donate. If you choose to write a check before the race, please make it payable to Pathways Hospice.

VOLUNTEER SPOTLIGHT: MARY KLOPFENSTEIN

Providing companionship and comfort for people in their last weeks and months of life would be difficult for many but it suits Mary Klopfenstein perfectly. Mary possesses a charismatic warmth and sincere interest in the well-being of others, working

for over twenty years in child welfare before joining Pathways Hospice as a Volunteer in January 2004. Mary takes her cues from the people she visits; often engaging in their hobby or interest, reading, or providing respite for caregivers. She under-

stands about patience and acceptance knowing that folks "don't have to be smiling and responsive" to benefit from a gentle touch of the hand. Her work with an 80-year old woman, Irene, was quite remarkable. Irene had numerous physical ailments and

had suffered a series of strokes that left her unable to put words together in an easily understandable way. She also expressed herself through crying quite a bit. Mary provided caregiver relief for Irene's daughter, Pat, one or two times a week. Pat states, "Mary went out of the way to find activities to do with my mom. Since Irene couldn't engage in 'normal' conversation, Mary found creative ways to connect and communicate with her. She went to the library and got picture books. She brought alphabet foam letters and they practiced memory games. She read to her and brought music that they would listen to. Mary

was always so loving and supportive of my mom and for me."

Mary, like many of the two hundred volunteers at Pathways Hospice, shares her compassion, warmth and humor with hospice patients wherever they call home, be it a private residence, nursing facility or at the Pathways Hospice Care Center. Sarah Van Etten, Volunteer Services Director for Pathways Hospice, comments that "Mary is able to walk into any situation with an open-heart and a non-judgmental spirit. Her flexibility and consistency is so important to families and she is able to bring a sense of

humor just when it is needed most".

Please join us in honoring Mary for her contributions to the many individuals she has cared for throughout the years.



Mary Klopfenstein

VOLUNTEER ANNIVERSARY OF SERVICE RECOGNITION

Please join us in recognizing the dedication and contributions of these wonderful volunteers. Words alone cannot express our appreciation for your assistance to this agency and those in need of your support at end of life. Hugs to all of you!

15 - 20 years

Mary Dellenbach 1994
 Janet Kamnikar 1994
 Mary Schacht 1994
 Cathy Sloan 1994
 Minora Stotts 1994
 Jane Householder 1994
 Mary Lu Lovett 1993
 Carole Becker 1993
 KT Smith 1991

10 - 15 years

Bruce Davis 1999
 Tina Deringer 1999
 Walta Ruff 1998
 Janet Greenlaw 1997
 Linda Coyne 1997

Don Fike 1996
 Jan Cartlidge 1995

5 - 10 years

Lisa Rachlin 2004
 Eleanor Oyen 2004
 Sandy Sawdey 2004
 Jean Jacques D'Aoust 2004
 Mary Jean Currier 2004
 Jodi Merrill 2004
 Marla Mitchell 2004
 Vera Moreno 2004
 Mary Klopfenstein 2004
 Jan Koechley 2004
 Richard Ball 2004
 Mary Peery 2004
 Wendy Borgman 2004
 Marva Lacy 2003
 Gail Follett 2003
 Dick White 2003
 Lori Nunnally 2003
 Dan Peel 2003
 Kate Polk 2003
 Jodi Mullins 2003
 Jean Deluhery 2003

Pat DesJardin 2003
 Renee Weisser 2002
 Charlotte Norris 2002
 Darleen Statucki 2002
 Jill Sanford 2002
 Charlie Cofer 2002
 Dick Gavin 2002
 Jane Anderson 2002
 Barbara Sward 2001
 Sue Walker 2001
 Ann Foorman 2001
 Catherine McDonald 2001
 Gil Merme 2001
 Kathy Mulica 2001
 Bob Hau 2001
 John Blair 2001
 Georgia Torson 2001
 Annie Mason 2001
 MaryAnn Randels 2000

EAGLE SCOUT CANDIDATE TACKLES GARDEN PROJECT FOR PATHWAYS HOSPICE

Ian Lancaster, a local high school student and Eagle Scout candidate, opted for an ambitious building and landscaping project to fulfill some of the requirements to attain his prestigious Eagle Scout designation. Ian explains, "I spent a long time looking for a project that would truly make a difference. When I heard about the hospice project I knew it was the one".

He constructed a garden, The Memory Bridge, at Pathways Hospice, finishing it in October. The vision for The Memory Bridge Garden is to create a place where grieving community members can sit and remember loved ones who do not

have a final resting place to visit. This space has been especially designed for those who have experienced unsupported losses such as the loss of an unborn child, mourning a person who is buried elsewhere and any loss that is unacknowledged and unrecognized. The garden is about 900 square feet and includes a Zen rock garden, a dry river bed, full flagstone path, two benches with awning structures, a bridge, and a planted boundary of currants, potentillas, and mountain sage.

Pathways Hospice gratefully acknowledges the generous contributors to this project including Fossil Creek Nursery,

Bath Garden Center, Cedar Supply, Clays Ace Hardware, Detailed Landscape, Gully Greenhouse, Loveland Garden Center, Pioneer Sand Co., and the many hours Ian put into planning, acquiring materials and building this garden along with the hard work of numerous volunteers to help with construction.

As an extension of services to those who are grieving, Pathways Hospice offers access to their gardens to all members of the community, free of charge. Other locations for quiet reflection in addition to *The Memory Bridge* include *The Memory Garden* and *The Labyrinth*.